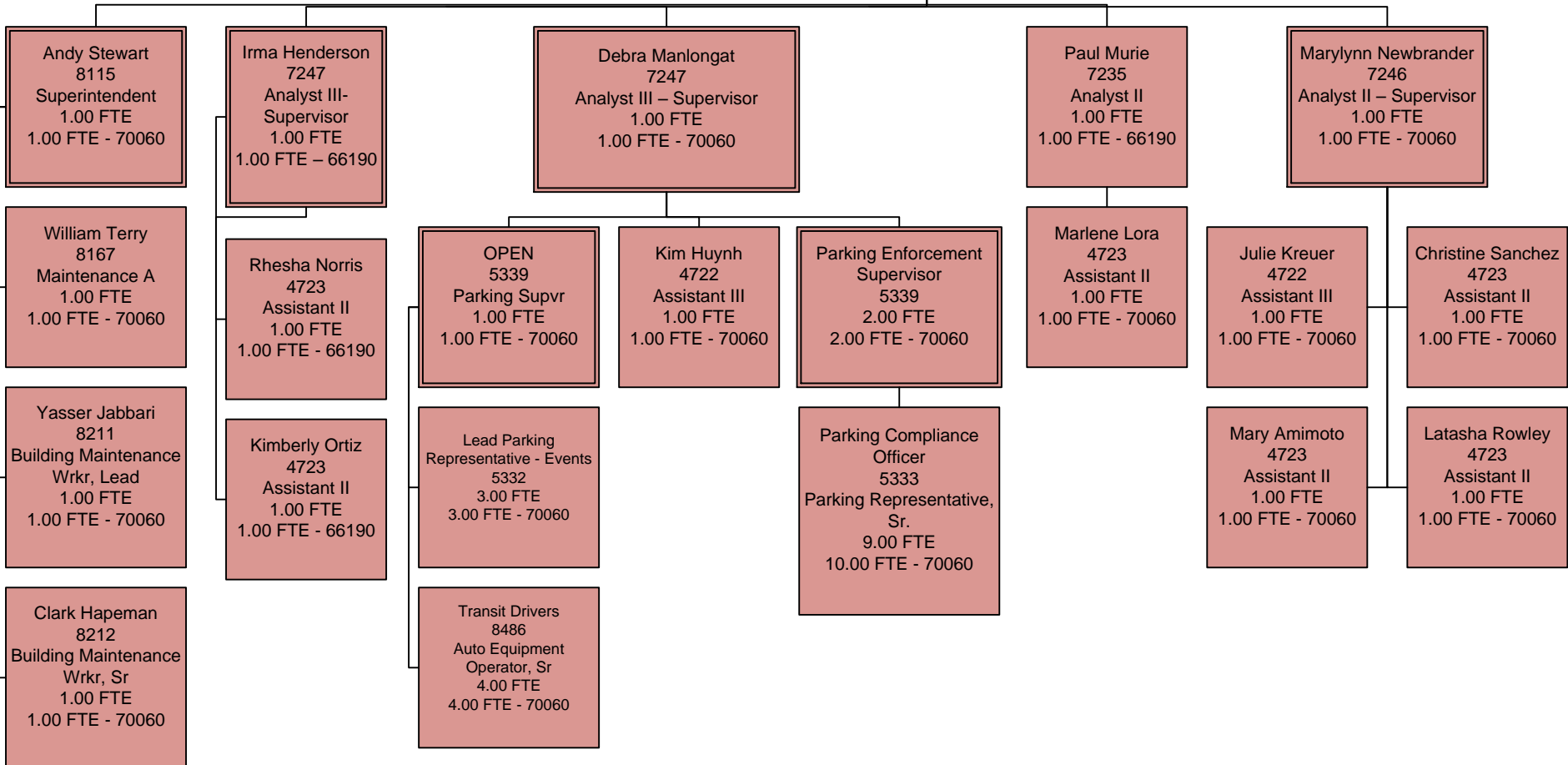


Transportation and Parking Services  
 Finance & Business Operations  
 FY2014-15

- General Funds
- Split between General/Other Funds
- Other Non-General Funds

Greg Artman  
 209  
 Interim Assoc. Vice Chan.(Ftl. area)  
 1.00 FTE  
 0.55 FTE - 19900; 0.20 FTE - 66990; 0.10 FTE - 66131;  
 0.10 FTE - 70060; 0.05 FTE - 66070

Irma Henderson  
 0245  
 Interim Director (Functional Area)  
 1.00 FTE  
 Provision 1.00 FTE - 70060



Fleet Services  
 Finance & Business Operations  
 FY2014-15

- General Funds
- Split between General/Other Funds
- Other Non-General Funds

